

Additional Offerings:

Care Management Program

If you are looking for a seamless, and fully synchronized, patient care experience spanning full episodes of care, Salient Healthcare's care management program, powered by Equipo, supports patient management and activation.

Integrate data from multiple sources, including your Electronic Health Records (EHR), Health Information Exchange (HIE), and claims in order to help with risk stratification of patients and identify high-risk, high-utilization patients who will benefit most from care management interventions. Care managers will be able to review easy-to-use, prioritized worklists for patient outreach.

For your care coordination activities:

- Manage resources and distribute workloads for care coordination activities
- Utilize standard care plans and assessments or customize your own
- Engage effectively with patients using reminders, secure message and telehealth
- Incorporate remote patient monitoring solutions to track patient progress

Data
Integration

Patient Identification /
Risk Stratification

Care Coordination /
Management

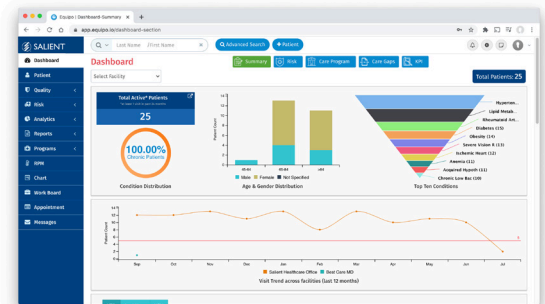
Performance
Management

Performance Management Augmented with Data Analytics and Reporting

Use the Salient Solution to analyze trends and discover a true ROI.

This package includes:

- Quality program management and workflow automation
- Insights from aggregated data - clinical, payor, pharmacy, and medical device
- Effective Task Management for multiple programs: Transitional Care Management (TCM), Chronic Care Management (CCM), Remote Patient Monitoring (RPM), Behavioral Health, Annual Wellness Visits (AWV)
- Closing the gap on medication adherence
- Community-based insights and outcomes
- Rules driven alerts and reminders
- Automated outreach workflows to drive efficiency



 **SALIENT** HEALTHCARE

A Division of Salient Management Company